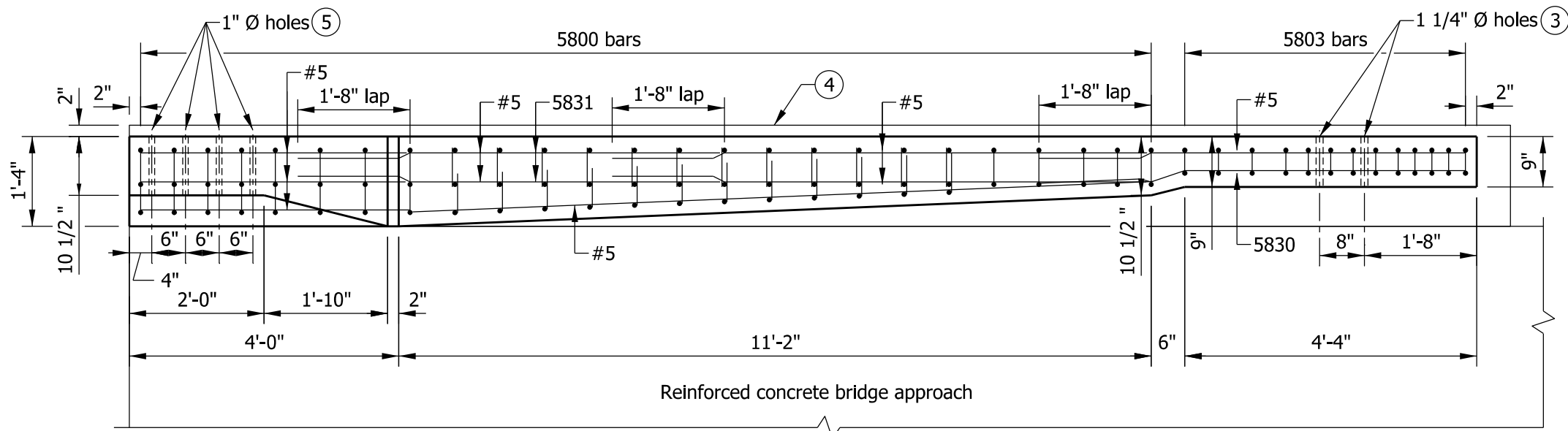



ELEVATION VIEW

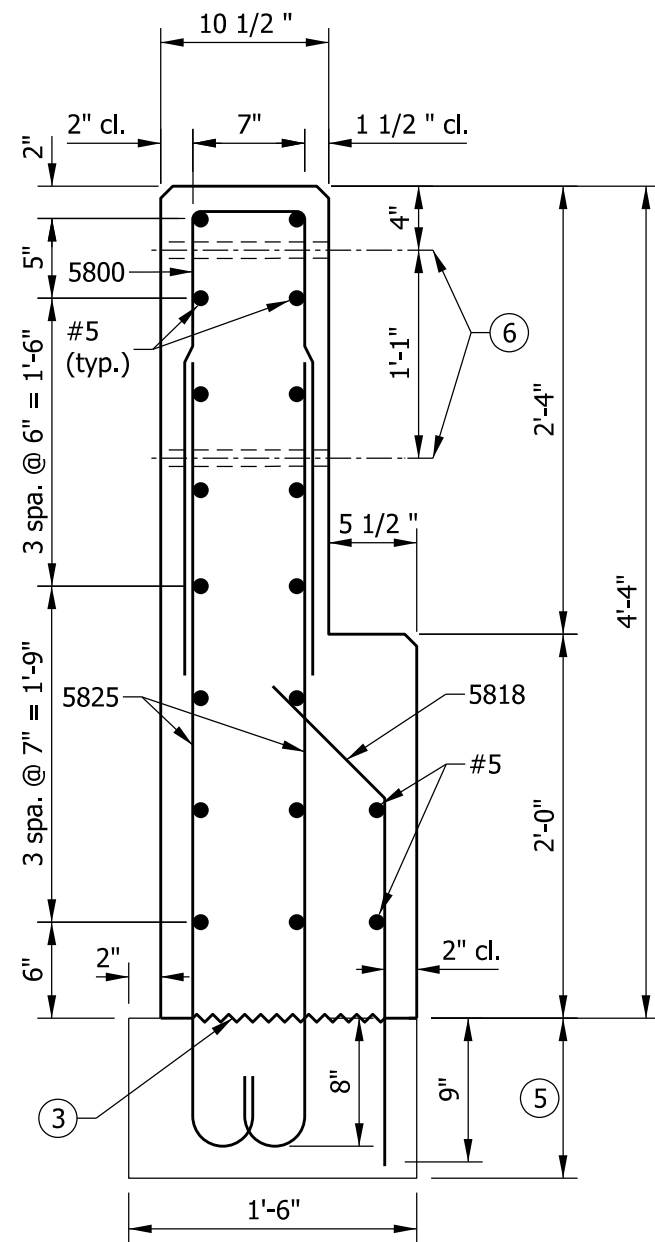


PLAN VIEW

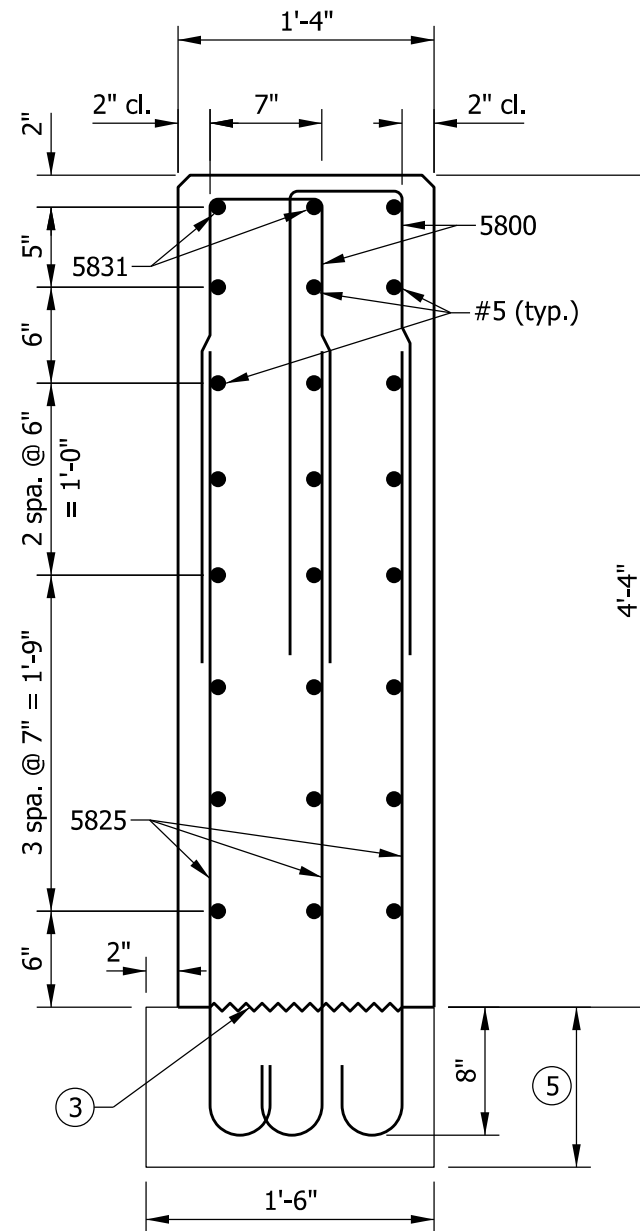
NOTES

1. See Standard Drawings E 706-TTTF-02 and E 706-TTTF-03 for sections.
2. See Standard Drawing E 706-TTTF-04 for reinforcing-bar diagrams and bill of materials.
- ③ Holes for attachment of guardrail transition, MGS transition, or type TGB. See Standard Drawing E 706-CBRT-04 for details.
- ④ RCBA extension for bridge railing transition type TTF-2. See Standard Drawing E 609-TBAE-02 for details.
- ⑤ Holes for attachment of steel bridge railing type TF-2. See Standard Drawing E 706-BRTF-01 for details.

INDIANA DEPARTMENT OF TRANSPORTATION									
CONCRETE BRIDGE RAILING TRANSITION, TTF-2									
SEPTEMBER 2012									
STANDARD DRAWING NO.	E 706-TTTF-01								
	<table style="width: 100%; border-collapse: collapse;"> <tr> <td style="width: 80%;"><i>/s/ Richard L. VanCleave</i></td> <td style="width: 20%; text-align: right;">09/04/12</td> </tr> <tr> <td>SUPERVISOR, ROADWAY STANDARDS</td> <td style="text-align: right;">DATE</td> </tr> <tr> <td><i>/s/ Mark A. Miller</i></td> <td style="text-align: right;">09/04/12</td> </tr> <tr> <td>CHIEF ENGINEER</td> <td style="text-align: right;">DATE</td> </tr> </table>	<i>/s/ Richard L. VanCleave</i>	09/04/12	SUPERVISOR, ROADWAY STANDARDS	DATE	<i>/s/ Mark A. Miller</i>	09/04/12	CHIEF ENGINEER	DATE
<i>/s/ Richard L. VanCleave</i>	09/04/12								
SUPERVISOR, ROADWAY STANDARDS	DATE								
<i>/s/ Mark A. Miller</i>	09/04/12								
CHIEF ENGINEER	DATE								



SECTION A-A



SECTION B-B

NOTES

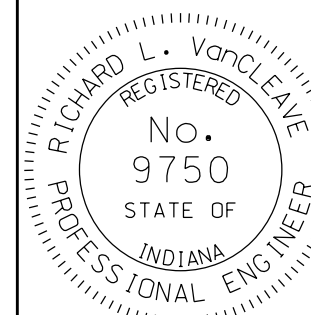
1. See Standard Drawing E 706-TTTF-01 for elevation and plan.
2. All chamfered edges shall be 3/4".
- ③ Construction joint type A. See Standard Drawing E 702-CJTA-01 for details.
4. See Standard Drawing E 706-TTTF-04 for reinforcing-bar diagrams.
- ⑤ RCBA extension for bridge railing transition type TTF-2. See Standard Drawing E 609-TBAE-02 for details.
- ⑥ 1" Ø hole for attachment of steel bridge railing type TF-2. See Standard Drawing E 706-BRTF-01 for details.

INDIANA DEPARTMENT OF TRANSPORTATION

CONCRETE BRIDGE RAILING
TRANSITION, TTF-2

SEPTEMBER 2012

STANDARD DRAWING NO. E 706-TTTF-02

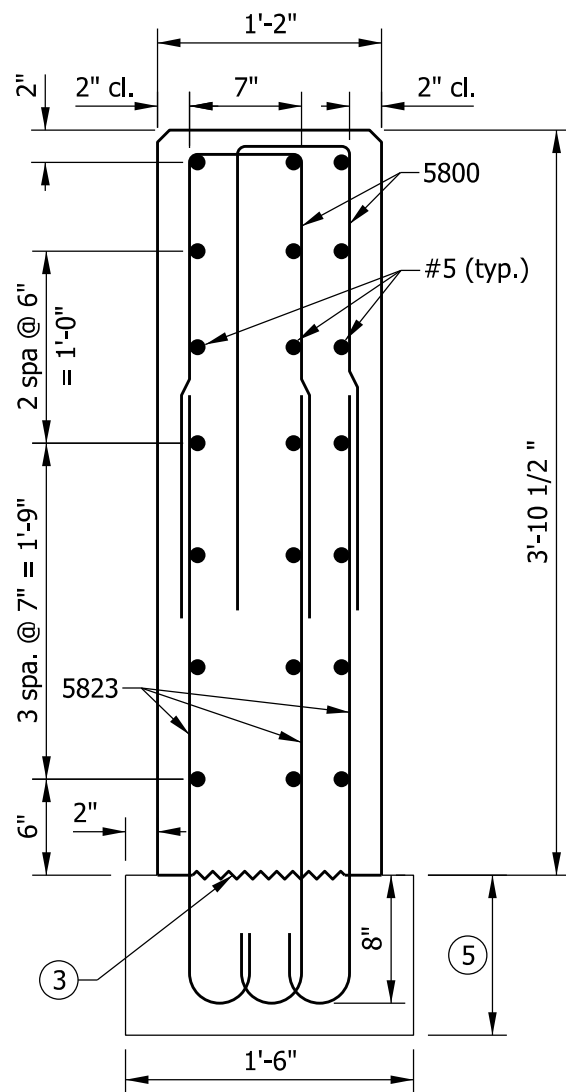


/s/ *Richard L. VanCleave* 09/04/12

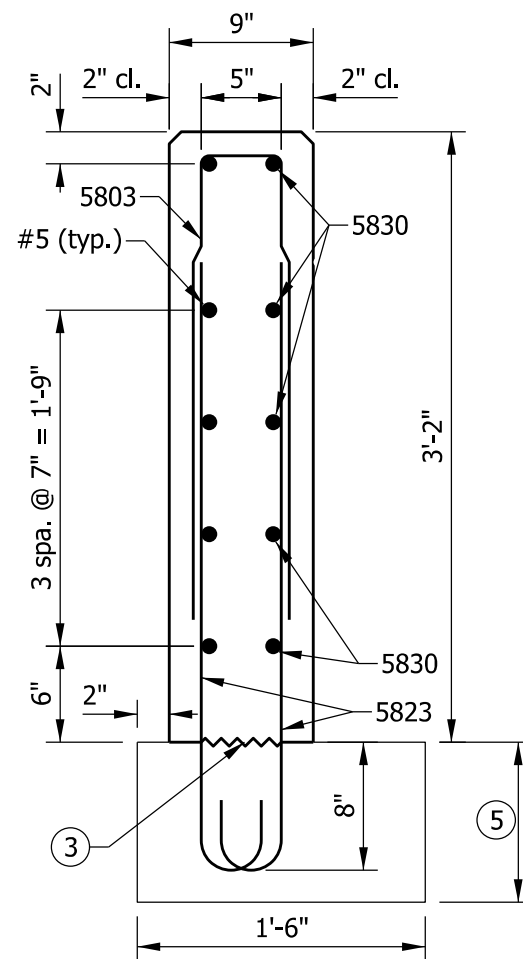
SUPERVISOR, ROADWAY STANDARDS DATE

/s/ *Mark A. Miller* 09/04/12

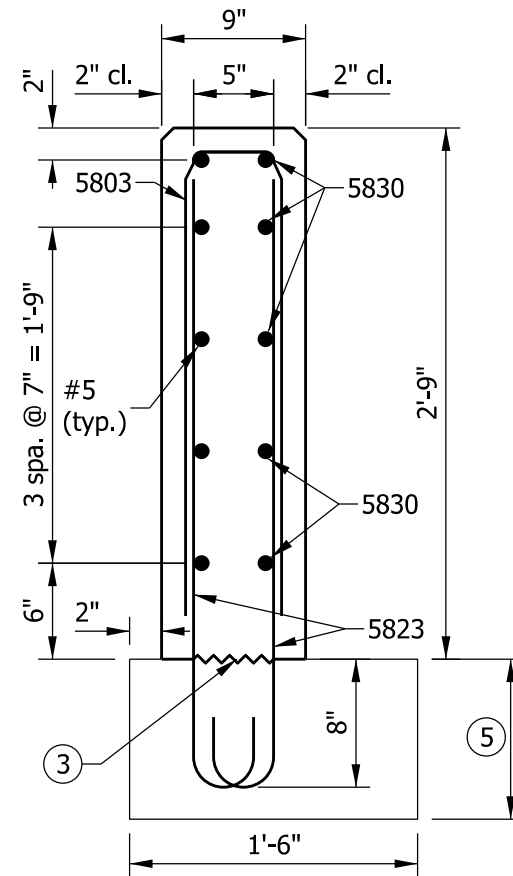
CHIEF ENGINEER DATE



SECTION C-C



SECTION D-D



SECTION E-E

NOTES

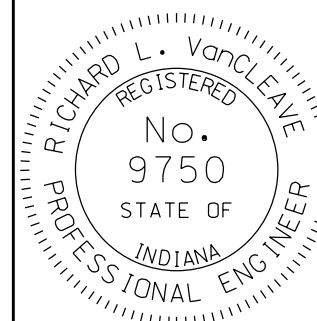
1. See Standard Drawing E 706-TTTF-01 for elevation and plan.
2. All chamfered edges shall be 3/4".
- ③ Construction joint type A. See Standard Drawing E 702-CJTA-01 for details.
4. See Standard Drawing E 706-TTTF-04 for reinforcing-bar diagrams.
- ⑤ RCBA extension for bridge railing transition type TTF-2. See Standard Drawing E 609-TBAE-02 for details.

INDIANA DEPARTMENT OF TRANSPORTATION

CONCRETE BRIDGE RAILING
TRANSITION, TTF-2

SEPTEMBER 2012

STANDARD DRAWING NO. E 706-TTTF-03

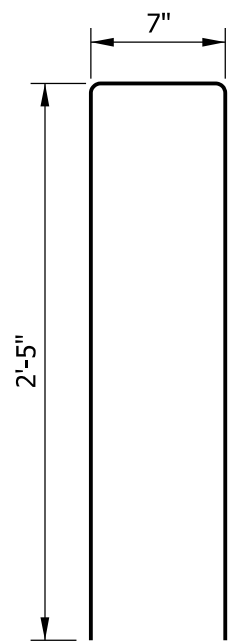


/s/ *Richard L. VanCleave* 09/04/12

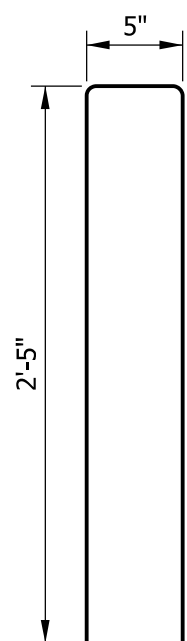
SUPERVISOR, ROADWAY STANDARDS DATE

/s/ *Mark A. Miller* 09/04/12

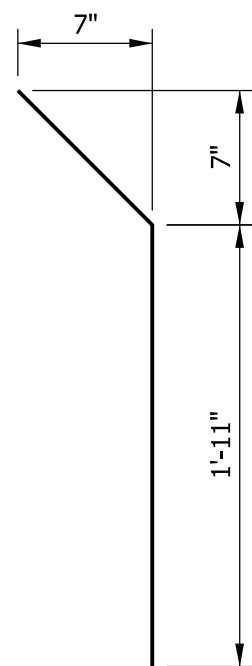
CHIEF ENGINEER DATE



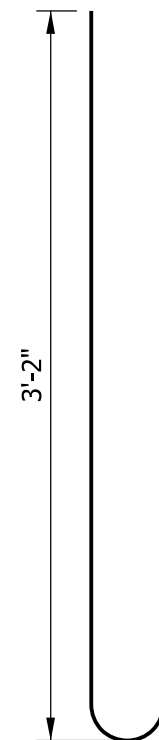
5800 x 5'-5"



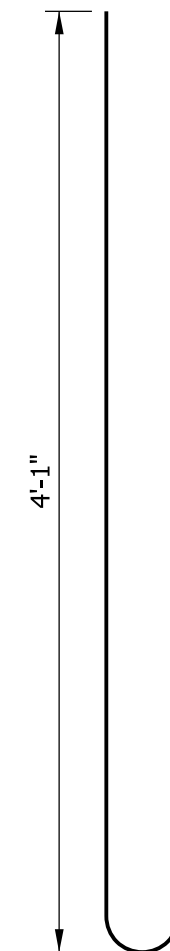
5803 x 5'-3"



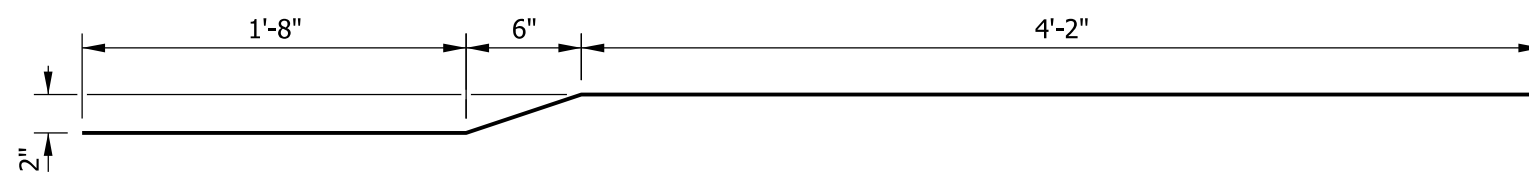
5818 x 2'-9"



5823 x 3'-9"



5825 x 4'-8"



5830 x 6'-4"



5831 x 6'-4"

NOTE

- See Standard Drawing E 703-BRST-01 for reinforcing-bar bending details and notes.

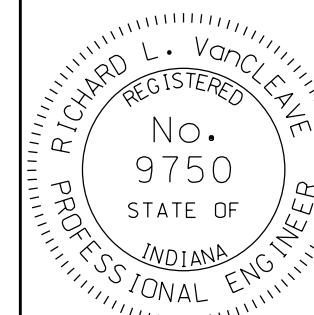
BILL OF MATERIALS			
Quantities are for one concrete bridge railing transition type TTF-2			
EPOXY-COATED REINFORCING STEEL			
MARK OR SIZE	NO. OF BARS	LENGTH	WEIGHT
5800	38	5'-5"	
5803	13	5'-3"	
5818	7	2'-9"	
5823	54	3'-9"	
5825	35	4'-8"	
5830	5	6'-4"	
5831	2	6'-4"	
#5	10	15'-0"	
#5	2	13'-1"	
#5	6	11'-0"	
#5	4	8'-0"	
#5	5	6'-4"	
#5	4	4'-0"	
Total Epoxy-Coated Reinforcing Steel			1072 LBS
MISCELLANEOUS			
Concrete, Class C			2.9 CYS
Surface Seal			182 SFT

INDIANA DEPARTMENT OF TRANSPORTATION

CONCRETE BRIDGE RAILING TRANSITION, TTF-2

SEPTEMBER 2012

STANDARD DRAWING NO. E 706-TTTF-04



/s/ *Richard L. VanCleave* 09/04/12
SUPERVISOR, ROADWAY STANDARDS DATE

/s/ *Mark A. Miller* 09/04/12
CHIEF ENGINEER DATE